

FREE ADMISSION



KIDS WILL HAVE FUN,



*and so will
Moms, Dads,
Grandmas,
and Grandpas*

Step back in time through artifacts, documents,
and photos to see how Rockford evolved from
forest to farm and from "Sawmill to City"



They saw the future...

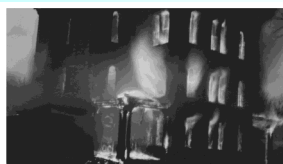
...We honor the past.



Watch historic videos

Relax or play in the
museum "forest"

**Learn how Rockford overcame several downtown fires,
ravaging floods, and the burning of its only school
to become the thriving area we enjoy today.**



Listen to music on an old Victrola and player piano.

**Learn about a bold decision in 1903 that changed
the face and the direction of Rockford's future,
and how, over 70 years later, that decision also
benefitted the Rockford Area Museum**

**Young guests* can win FREE ICE CREAM
playing "Hunt for History" *Age 12 and under**



The Rockford Area Museum, 21 S. Monroe Street
at Maple Street, next to City Hall.

OPEN EVERY DAY EXCEPT MONDAY

Phone 616 866-2235

Email: rockfordmuseum@gmail.com

Historical Society and RAM Mail: PO Box 781, Rockford, MI 49341



*The RAM is presented by the
Rockford Area Historical Society.
We are proud to serve the
City of Rockford, our neighboring
townships of Algoma, Cannon,
Courtland, and Plainfield plus
visitors from around the world.*

Formed by eight visionaries in 1967, the goal of the Rockford Area Historical Society (RAHS) has always been to preserve and protect the rich heritage of the entire Rockford area.

The first historical museum opened in 1976 in a small former powerhouse that lacked running water, bathrooms, sufficient display space, and parking. Dedicated volunteers made it work for 37 years until 2013 when the new RAM opened in a building that had housed Kent County's 63rd District Court.

The RAM is the result of thousands of volunteer hours and local grass roots fund raising that provided over \$330,000 to create a museum that sets a high standard of excellence for small city museums. The RAM depends on RAHS dues, donations, pledges, and grants to cover operating expenses.

There is never a fee for museum admission or services.

MUSEUM HOURS - CLOSED ON MONDAY

Tuesday: 1PM - 4PM

Friday: 1PM - 4PM

Wednesday: 1PM - 4PM

Saturday: Noon - 4PM

Thursday: 10AM - 4PM

Sunday: 1PM - 4PM

Closed holidays.

Please call for specific holiday period hours.

The RAHS hosts a meeting and social gathering on the first Thursday of every month from September through June at the Rockford Community Cabin at 220 N. Monroe Street.

In June and December, picnic and holiday potlucks are held. Other months feature entertaining and educational programs with historical perspectives on local, national, or global topics.

Programs are FREE and OPEN TO THE PUBLIC.

Details are available on our website.

Other RAM and RAHS services include group tours for guests of all ages, off site group presentations, research assistance by appointment, and a quarterly newsletter for RAHS members.

We invite you to help the RAHS by becoming a member.

There is a membership plan just right for you.

Memberships run for one calendar year, renewable every January.

Student: \$5 Individual: \$10 Family: \$20

Want to help more? Join as a Donor (\$25) or Patron (\$50)

These donations in addition to regular dues are appreciated.

LIFETIME MEMBERSHIP: \$150

Covers two people living at one address. It provides member benefits at over 700 other museums through our affiliation with NARM.

(North American Reciprocal Museum Association)

Visit narmassociation.org online for a list of NARM Institutions